



Sprung

innovation | versatility | reliability

TOLL FREE: 1-800-528-9899
OR (408) 245-8371 www.sprung.com

GENERAL NOTES:

- ALL PERSONNEL DOORS C/W PANIC HARDWARE & HOODS.
- STRUCTURE TO BE INSULATED WITH FIBERGLASS BATT INSULATION C/W INNER LINER, TO SKYLIGHT LEVEL ONLY.
- INNER & OUTER MEMBRANE TO BE FINISHED TO CONCRETE USING ALUM. FLAT BAR
- STRUCTURE MEMBRANE MEETS: NFPA 701, CALIFORNIA STATE FIRE MARSHAL, ASTM E84, UBC 31-1, AND ULCS109 SPECIFICATIONS
- THIS STRUCTURE IS DESIGNED TO SHED SNOW. THE PERIMETER OF THE STRUCTURE SHOULD BE KEPT CLEAR.
- WHEN DESIGNING A HEATING, VENTILATION OR AIR CONDITIONING SYSTEM FOR ANY TYPE OF BUILDING, IT IS IMPORTANT TO ENSURE THAT THIS SYSTEM INTAKES MORE AIR THAN IS BEING EXHAUSTED AT ANY GIVEN TIME. THIS PROCESS WILL RESULT IN A POSITIVE PRESSURE BEING MAINTAINED. CONVERSELY, IF NEGATIVE PRESSURE EXISTS WITHIN THE STRUCTURE, IT WILL BE DIFFICULT TO OPEN DOORS AND MOISTURE WILL BE DRAWN INTO THE STRUCTURE.
- ALL INTERIOR WALLS & PARTITIONS (IF APPLICABLE) TO BE FREE STANDING & INDEPENDENT OF SPRUNG STRUCTURE.

DESIGN LOADS

STRUCTURE LOCATION: MOSCOW, RUSSIA
BUILDING CODE: SNIP
WIND SPEED: 3.5 M/S EXPOSURE
GROUND SNOW LOAD: 18KPa (SEE SNOW SHED REPORT)

SIGNATURE SERIES

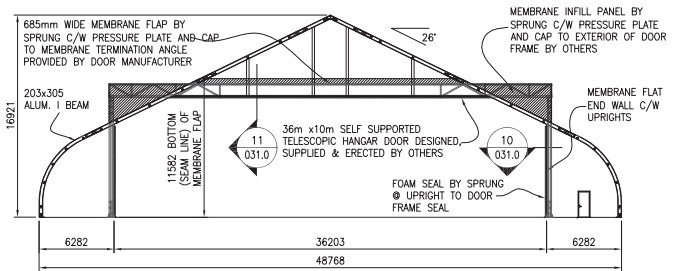
NO.	DATE	DESCRIPTION
6	04/10/08	REVISION WITH FRAME DETAILS
5	04/04/08	REVISION FOAM SEAL DETAIL
4	4/2/08	REVISION TO DETAILS
3	1/29/08	ADD MEMBRANE SEAL DETAILS
2	3/19/08	ADD EXTRA CB @ FLAT END

This drawing is released by copyright to the United States of America, Canada and all other countries of the world. It, and all of the designs, technical data and engineering practices represented by it, and organized or modified by REPUBLIC ENGINEERING INC, are the exclusive property of REPUBLIC ENGINEERING STRUCTURES INC. and must neither be used nor reproduced or disclosed nor represented in whole or in part except with the prior written consent of REPUBLIC ENGINEERING STRUCTURES INC. Any copies of this drawing in whole or in part and any use of it to construct the subject matter described in it without prior written permission of REPUBLIC ENGINEERING STRUCTURES INC is prohibited.

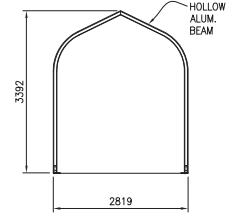
AVCOM-D LTD.

48.8m x 70.6m
AIRCRAFT HANGAR

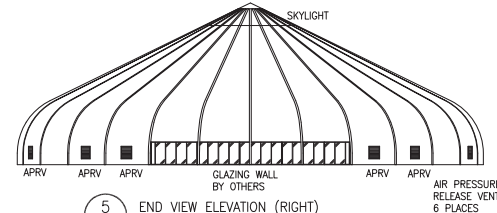
DRAWN	K.COX	DATE	02/27/2008
CHECKED		APP'D	
SCALE	AS NOTED	DRAWING #	P08031.0
		CUST.APP'L	



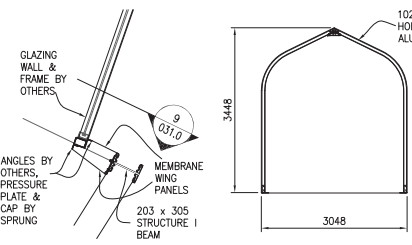
3 CUSTOM FLAT END 48.8m INSULATED STRUCTURE
031.0 1:200



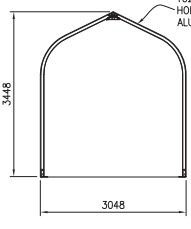
5 SECTION 2.8m HOOD
031.0 1:50



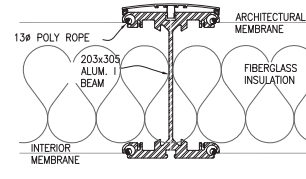
5 END VIEW ELEVATION (RIGHT)
031.0 1:250



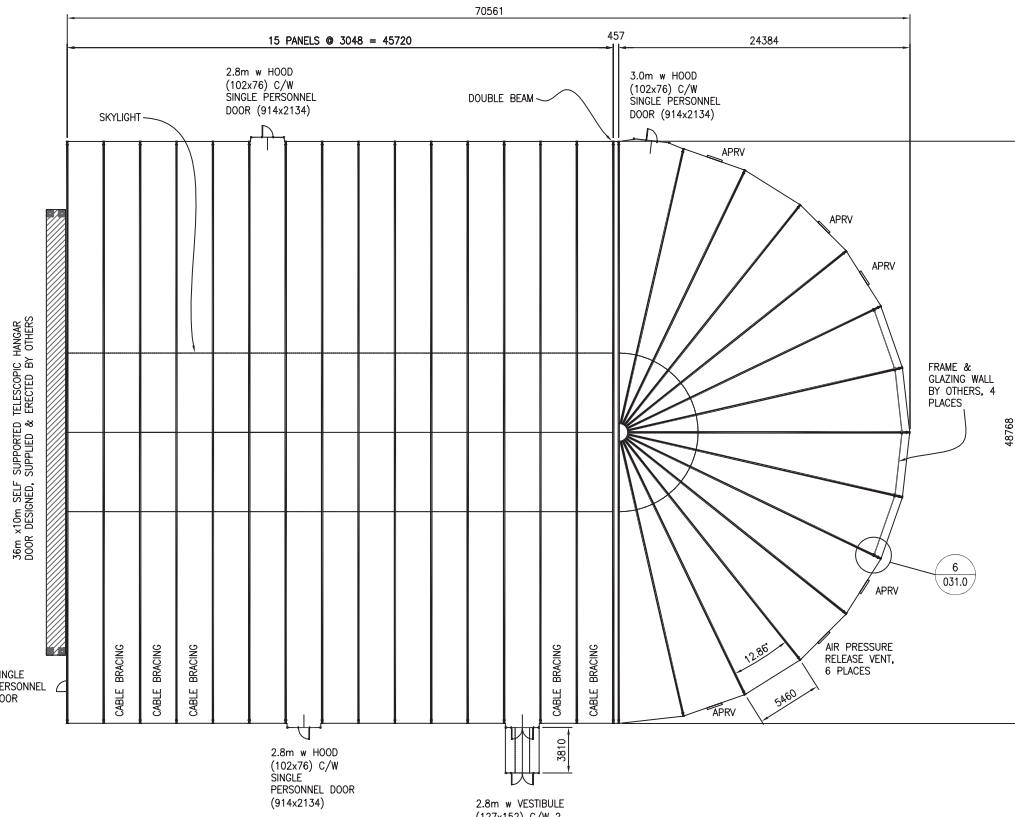
6 PLAN VIEW GLAZING WALL
031.0 1:25



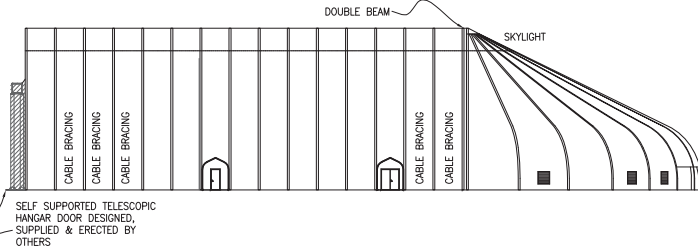
7 SECTION 3.0m HOOD
031.0 1:50



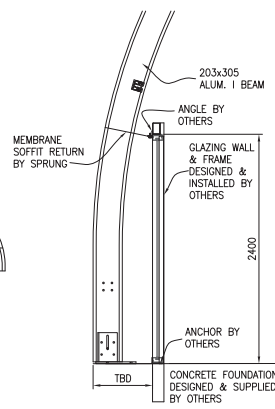
8 203x305 INSUL. BEAM SECTION
031.0 1:5



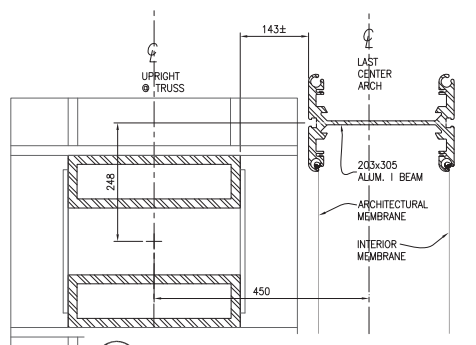
1 PLAN VIEW
031.0 1:200



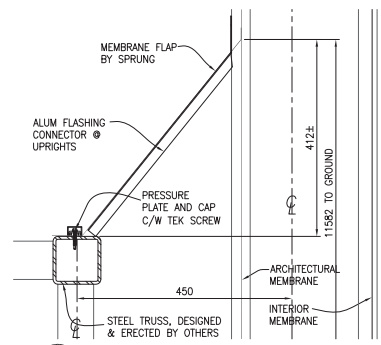
2 ELEVATION
031.0 1:250



9 SECTION GLAZING WALL
031.0 1:25



10 UPRIGHT SEAL @ DOOR TRUSS - PLAN
031.0 1:5



11 HEADER SEAL @ DOOR TRUSS - SECTION
031.0 1:5