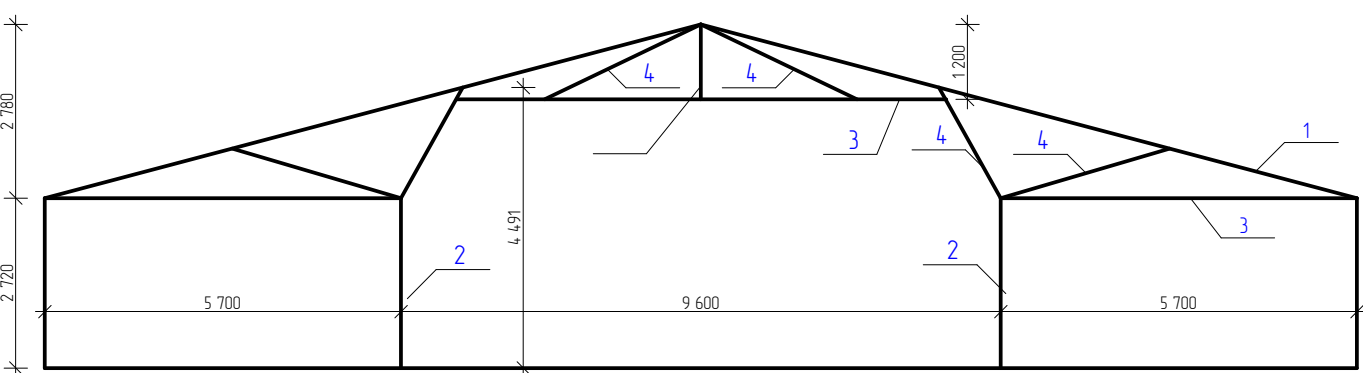


The drawing shows a rectangular room layout with a total width of 21,200 and a total height of 18,000. The layout is defined by a grid of dashed lines. The horizontal grid lines are labeled 1, 2, 3, and 4 at the bottom. The vertical grid lines are labeled А, Б, В, and Г on the left side. The dimensions are as follows:

- Horizontal dimensions: 5,800 (between lines 1 and 2), 9,600 (between lines 2 and 3), and 5,800 (between lines 3 and 4). The total width is 21,200.
- Vertical dimensions: 6,000 (between lines А and Б), 6,000 (between lines Б and В), and 6,000 (between lines В and Г). The total height is 18,000.

The room is divided into three horizontal sections by the grid lines. The top section (between lines В and Г) is a large open space. The middle section (between lines Б and В) contains two horizontal lines with a zigzag pattern, representing a partition or a decorative element. The bottom section (between lines А and Б) is a large open space. The walls are indicated by a thick red hatched border. There are small red squares at the intersections of the grid lines and the walls, and small red dots at the intersections of the grid lines within the room area.



| | | | | |
|--------------|--|--|--|--------|
| | | | | |
| | | | | |
| | | | | |
| ГАП | | | | |
| ГИП | | | | |
| Нач. отд. | | | | Стадия |
| Гл. сплн. | | | | Лист |
| Рук. гр. | | | | Листов |
| Проверил | | | | |
| Проектировал | | | | |
| И. контр. | | | | |

Предложение

Итог