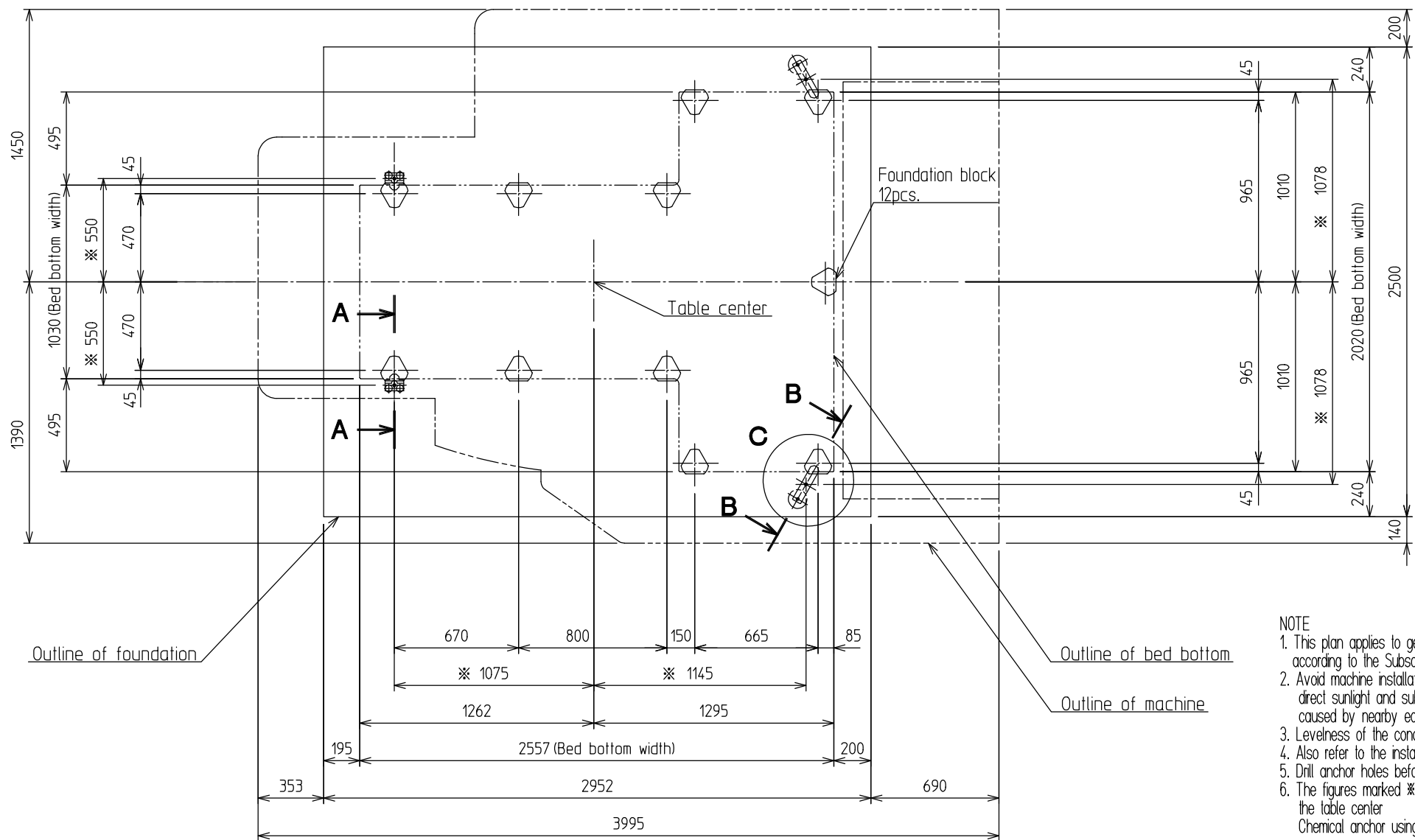


- [illegible]

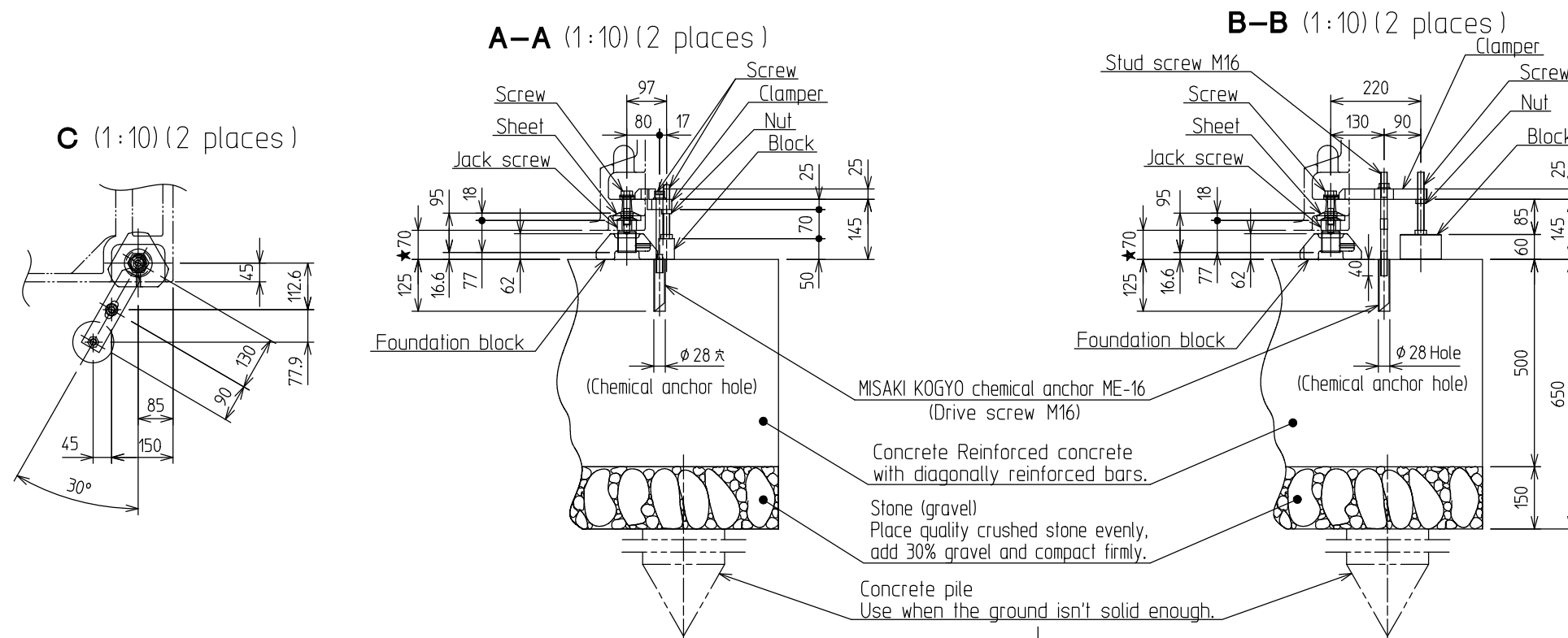


- NOTE
1. This plan applies to general standards. Determine the concrete thickness according to the Subsoil of the installation site.
 2. Avoid machine installation areas which are excessively dusty, exposed to direct sunlight and subject to excessive temperature variations or impacts caused by nearby equipment.
 3. Levelness of the concrete foundation surface shall be kept within 10mm.(0.39in.)(mark ★)
 4. Also refer to the installation drawing and dimensional drawing.
 5. Drill anchor holes before machine installation.
 6. The figures marked ※ indicate the position of chemical anchor holes from the table center
Chemical anchor using in this drawing is ME-16 of MISAKI KOGYO

※Chemical anchor is optional.

This foundation drawing must be used as a reference. It is a must for you to let a fachman to make the foundation drawing by considering the actual condition of the ground.

Estimated surface pressure & weight			
No. of ATC tools	32	48	
Machine weight	No.40 tool	16,200kg	16,450kg
	No.50 tool	16,400kg	16,700kg
Max. allowable weight of workpiece	500kg		
Weight of concrete foundation	*11,100kg		
Average surface pressure of bottom of concrete foundation	*0.031MPa (3.1ton/m ²)		
Safety requirement for ground resistance	*0.046MPa (4.7ton/m ²)		



Any technical information is subject to change without notice.

Unit : mm

MU-5000V	5-Axis Vertical machining center
Foundation drawing No.40/50 32/48-tool ATC	
DRWGNo.	13-652-000-001 TS
OKUMA Corporation	

2013.10.17