

KIA autocenter

Ulan-Ude sity

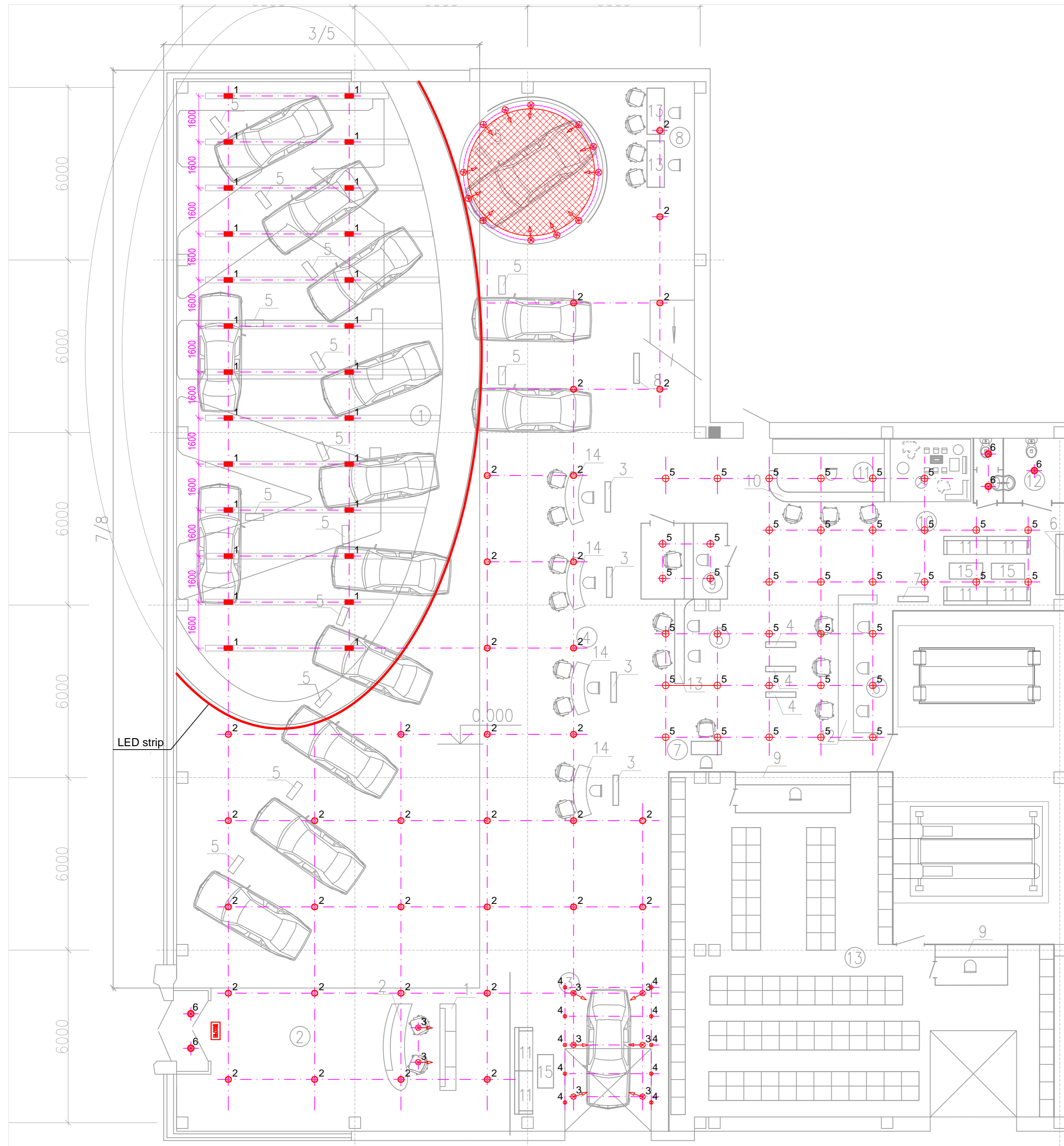
# Lighting project

Arrangement of lighting equipment

Engineer lighting technician

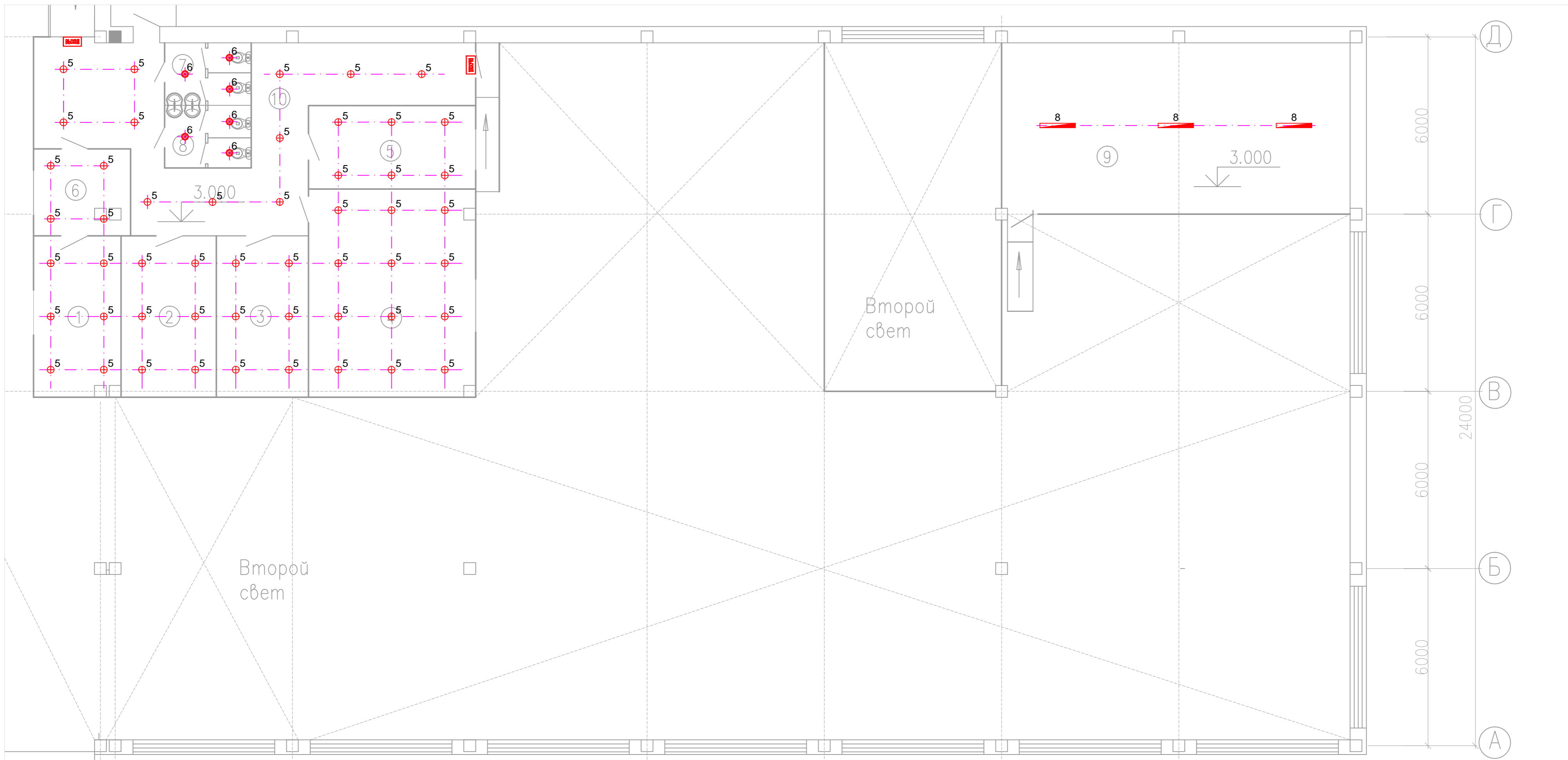
Santalov U.

Ekaterinburg, 2013



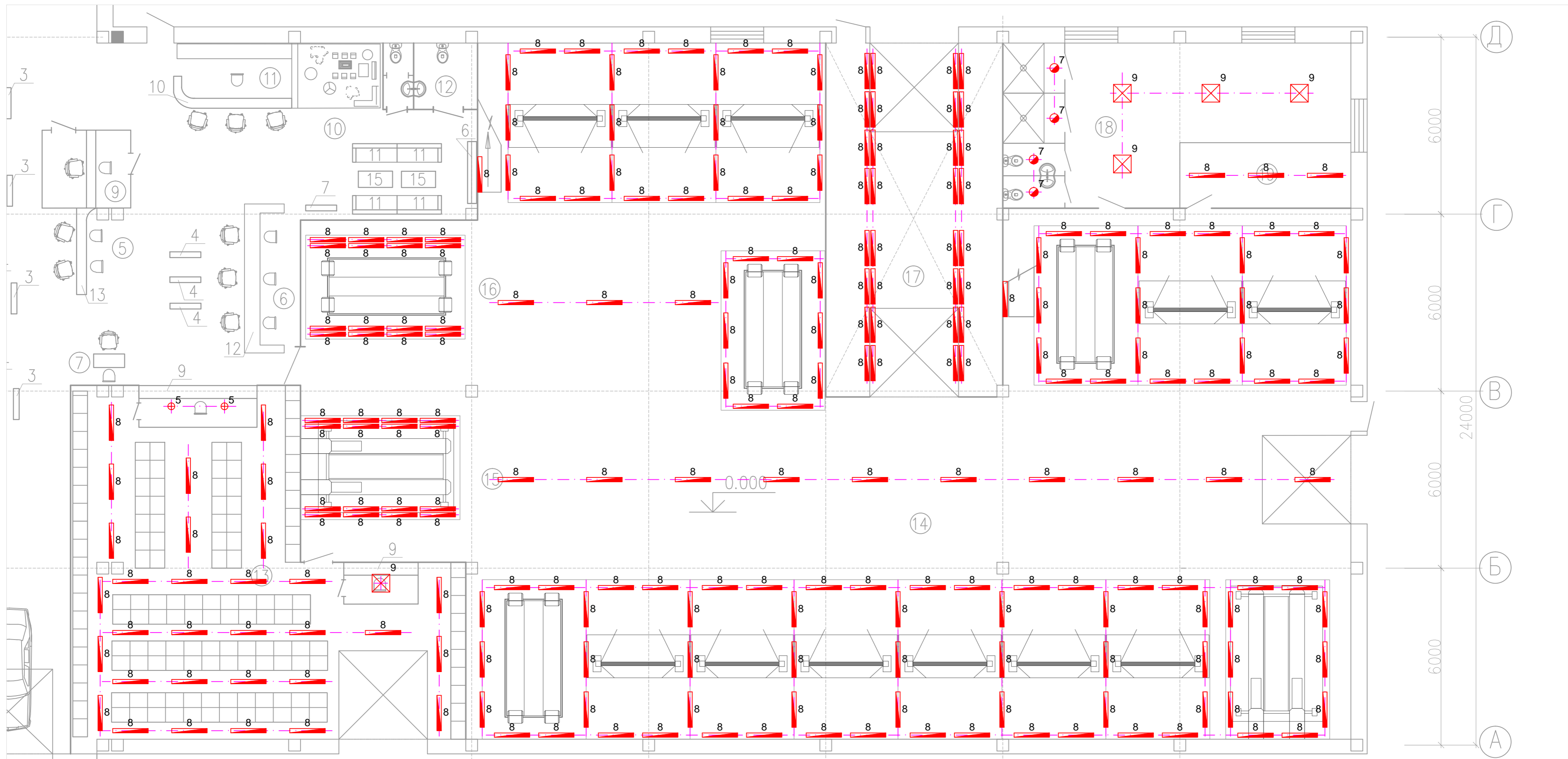
Specification lighting equipment				
№	Designation	Type luminaire and lamp	Manufacturer	Q-ty. pcs.
1	1	Noname 2x70 W, 30°	No	26
2	2	Noname 70 W	No	36
3	3	Noname 35 W, 55°	No	8
4	4	Noname LED WW (light, embedded in the floor)	No	10
5	5	Noname 2x32W	No	37
6	6	Noname 2x26W IP44	No	5
7	7	Noname 2x18W	No	-
8	8	Noname LED PC IP65	No	-
9	9	Noname 4x18 W	No	-
10	10	Round ceiling light	No	1
11	11	Evacuation lighting fixture	No	1

				ПЗС/Е-2537-30			
				KIA autocenter, Ulan-Ude city.			
Developer		Santalov U.		Sign	Date	Arrangement of lighting equipment. Lighting project.	
					20.12.	List	
						1	
						First floor. Client area.	



Specification lighting equipment				
№	Designation	Type luminaire and lamp	Manufacturer	Q-ty, pcs.
1	1	Noname 2x70 W, 30°	No	-
2	2	Noname 70 W	No	-
3	3	Noname 35 W, 55°	No	-
4	4	Noname LED WW (light, embedded in the floor)	No	-
5	5	Noname 2x32W	No	51
6	6	Noname 2x26W IP44	No	6
7	7	Noname 2x18W	No	-
8	8	Noname LED PC IP65	No	3
9	9	Noname 4x18 W	No	-
10	10	Round ceiling light	No	-
11	11	Evacuation lighting fixture	No	2

				ПЭС/Е-2537-30	
				KIA autocenter, Ulan-Ude city.	
		Sign	Date	Arrangement of lighting equipment. Lighting project.	
Developer	Santalov U.		20.12.		
				List	
				2	
				Second floo.	



Specification lighting equipment

№	Designation	Type luminaire and lamp	Manufacturer	Q-ty, pcs.
1	1	Noname 2x70 W, 30°	No	-
2	2	Noname 70 W	No	-
3	3	Noname 35 W, 55°	No	-
4	4	Noname LED WW (light, embedded in the floor)	No	-
5	5	Noname 2x32W	No	2
6	6	Noname 2x26W IP44	No	-
7	7	Noname 2x18W	No	4
8	8	Noname LED PC IP65	No	233
9	9	Noname 4x18 W	No	5
10	10	Round ceiling light	No	-
11	11	Evacuation lighting fixture	No	-

				ПЭС/Е-2537-30	
				KIA autocenter, Ulan-Ude city.	
		Sign	Date	Arrangement of lighting equipment. Lighting project.	
Developer	Santalov U.		20.12.		
				First floo. Service area.	
				List	3