

Table with 10 columns and 20 rows, likely a schedule of materials or equipment. Includes a title block at the top.

Table with 10 columns and 20 rows, likely a schedule of materials or equipment. Includes a title block at the top.

Table with 10 columns and 20 rows, likely a schedule of materials or equipment. Includes a title block at the top.

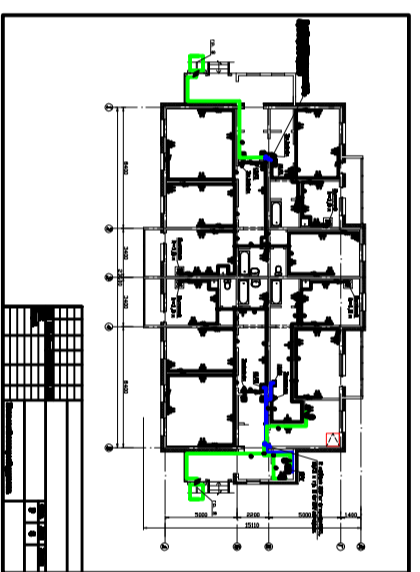
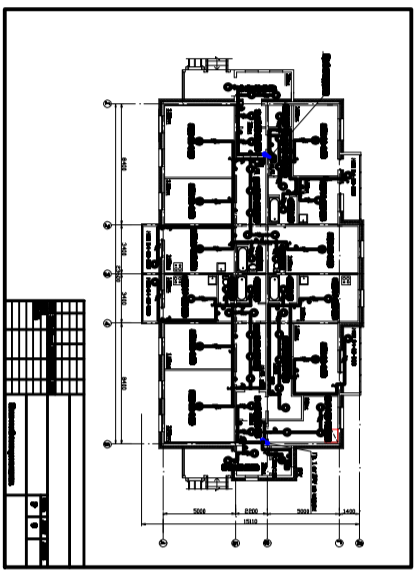


Table with 10 columns and 20 rows, likely a schedule of materials or equipment. Includes a title block at the top.

Technical specification text, possibly describing material or equipment requirements.

